

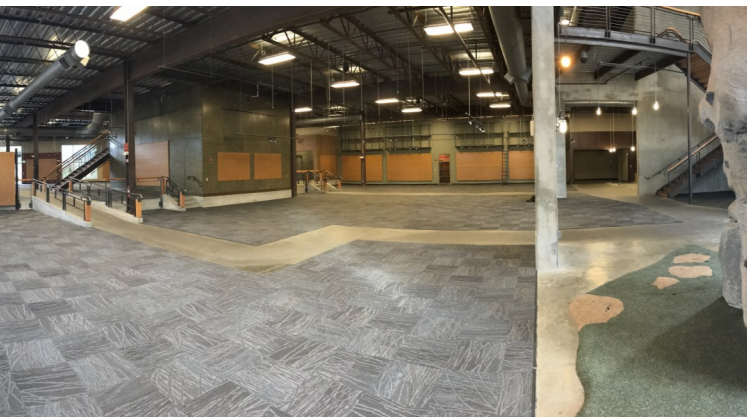
PMF Investments is pleased to present:

FOR LEASE

REDMOND BUILDING (FORMER REI)

7500 166TH Avenue NE, Redmond, WA 98052

CONTENTS: 2 First Floor Plan | 3 Second Floor Plan | 4 Aerial Plan | 5 Competition Aerial



Anchor Position in Bustling Downtown Site

- Light & bright, well-known building at main entrance to Redmond Town Center
- Warm vanilla shell—new HVAC and roof in 2012
- Two loading docks and sprinklered storage and racking in place
- Adjacent to new light rail station (2023)
- Ready for immediate occupancy
- Floor 1: 20,446sf & Floor 2: 14,427sf



PMF INVESTMENTS

Deborah Oswald

V.P., Brokerage & Commercial Leasing

C: 425-443-0221 P: 425-746-6066

deborah@pmfinvestments.com

Blake Springer-Trybus

Associate Broker & Marketing Coordinator

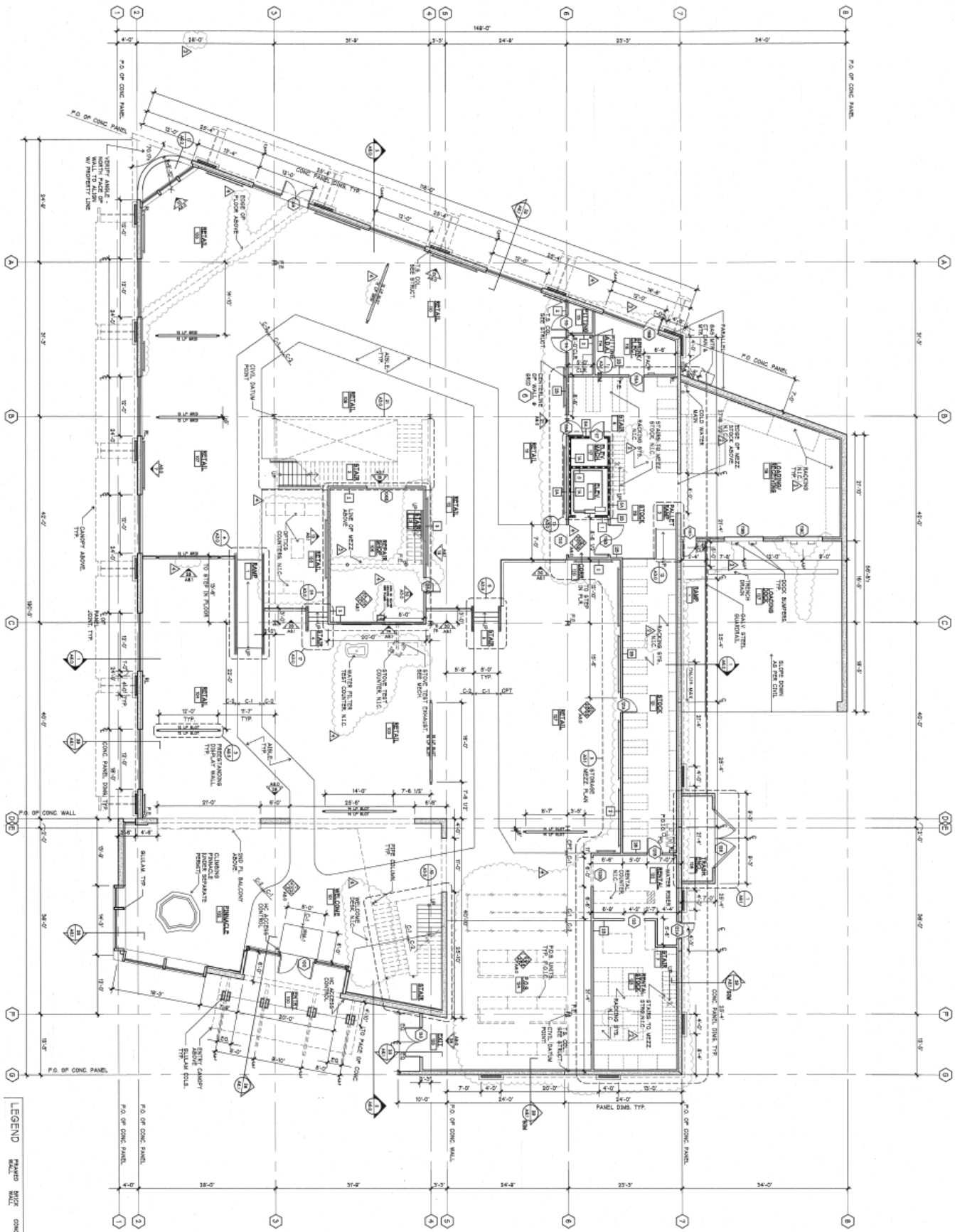
C: 425-785-9474 P: 425-746-6066

blake@pmfinvestments.com

The information contained herein has been obtained from sources deemed to be reliable, however PMF Investments makes no warranties or representations to its accuracy. All information should be independently verified by prospective tenants and/or their representatives.

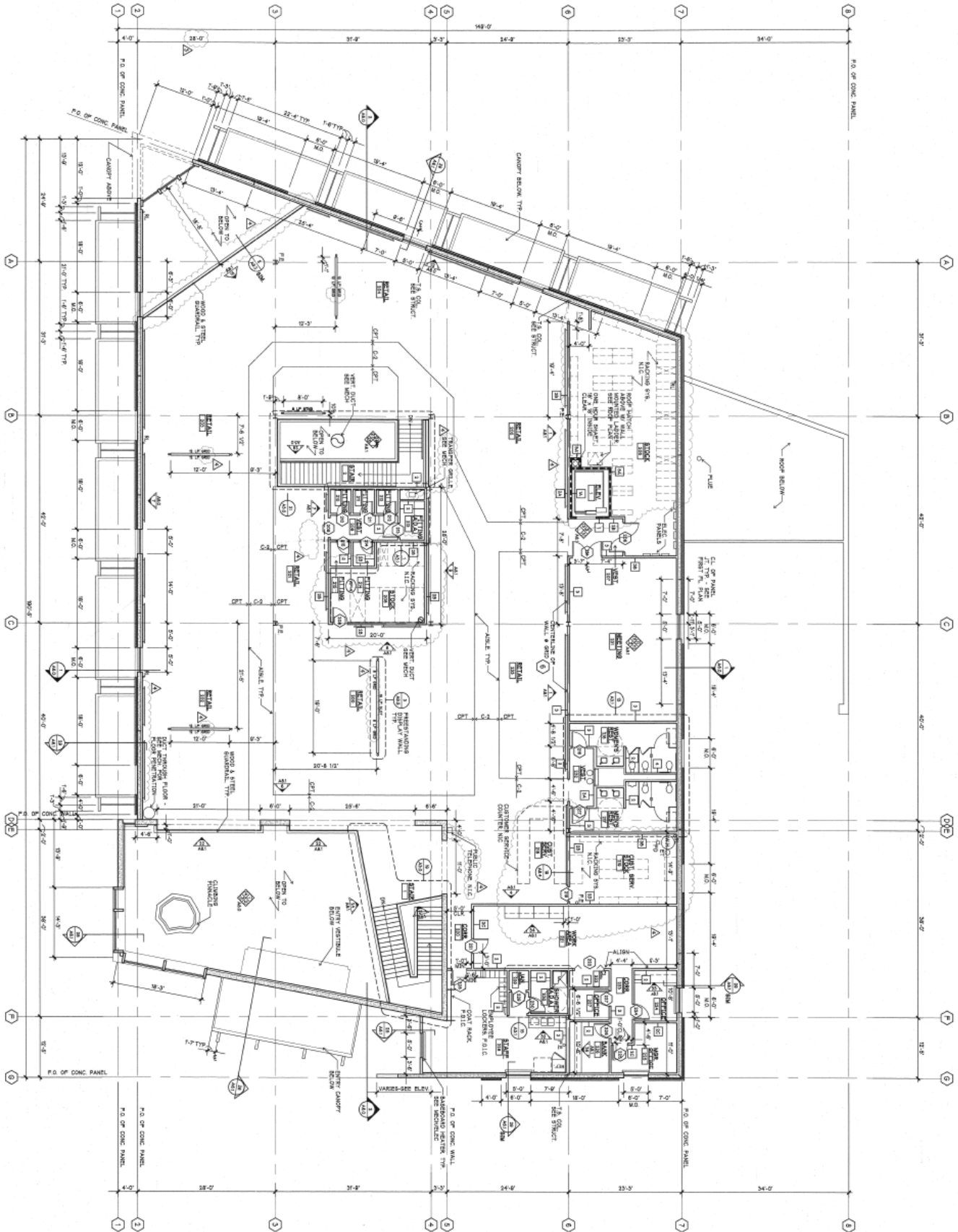
REDMOND BUILDING

First Floor Plan



REDMOND BUILDING

Second Floor Plan



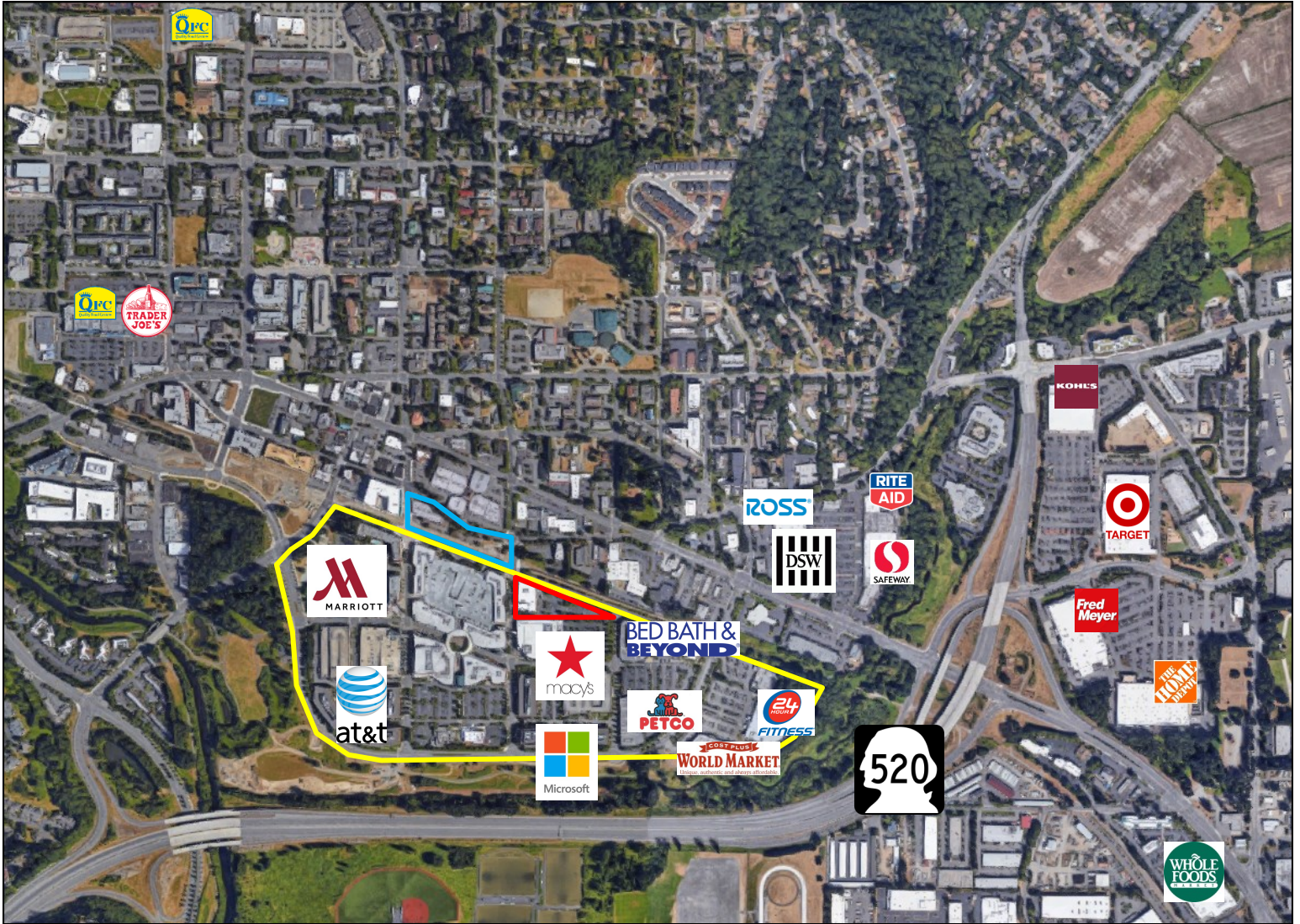
REDMOND BUILDING

Aerial Plan



REDMOND BUILDING

Competition Aerial



<u>Demographics</u>	<u>1-Mile</u>	<u>3-Mile</u>	<u>5-Mile</u>
Population	13,382	92,748	248,773
Household Income	\$118,304	\$139,862	\$138,446
Daytime Population	20,084	92,651	186,157



PMF INVESTMENTS

Deborah Oswald C: 425-443-0221 P: 425-746-6066 deborah@pmfinvestments.com

Blake Springer-Trybus C: 425-785-9474 P: 425-746-6066 blake@pmfinvestments.com

pmfinvestments.com 15015 Main Street, Suite 203, Bellevue, WA 98007

The information contained herein has been obtained from sources deemed to be reliable, however PMF Investments makes no warranties or representations to its accuracy. All information should be independently verified by prospective tenants and/or their representatives.