

PMF Real Estate Services is pleased to present:

**FOR LEASE**

# MARKETPLACE BUILDING

10027-10029 Main Street, Bothell, WA 98011

CONTENTS: 2 Dimensioned Plan | 3 Space Plan | 4 Aerial Map



## High-Exposure Downtown Bothell Retail

- 6,875sf retail/office building (4,471sf main floor)
- Building & pylon signage exposure to Main St
- 43 dedicated parking stalls plus street parking and ample employee parking in downtown
- 1,055 NEW University of Washington Student Housing units under construction ~2,500ft away
- Abutting SR-522 (50,000vpd) with signage opp., ~3,000ft from University of Washington Bothell and Cascadia College joint campuses with ~10,000 students enrolled & ~1,000 staff/faculty



**PMF REAL ESTATE SERVICES**  
*a PMF Investments Company*

**Deborah Oswald**

**Executive Vice President, Real Estate Services**

C: 425-443-0221 P: 425-746-6066

[deborah@pmfinvestments.com](mailto:deborah@pmfinvestments.com)

**Blake Springer-Trybus**

**Vice President, Brokerage**

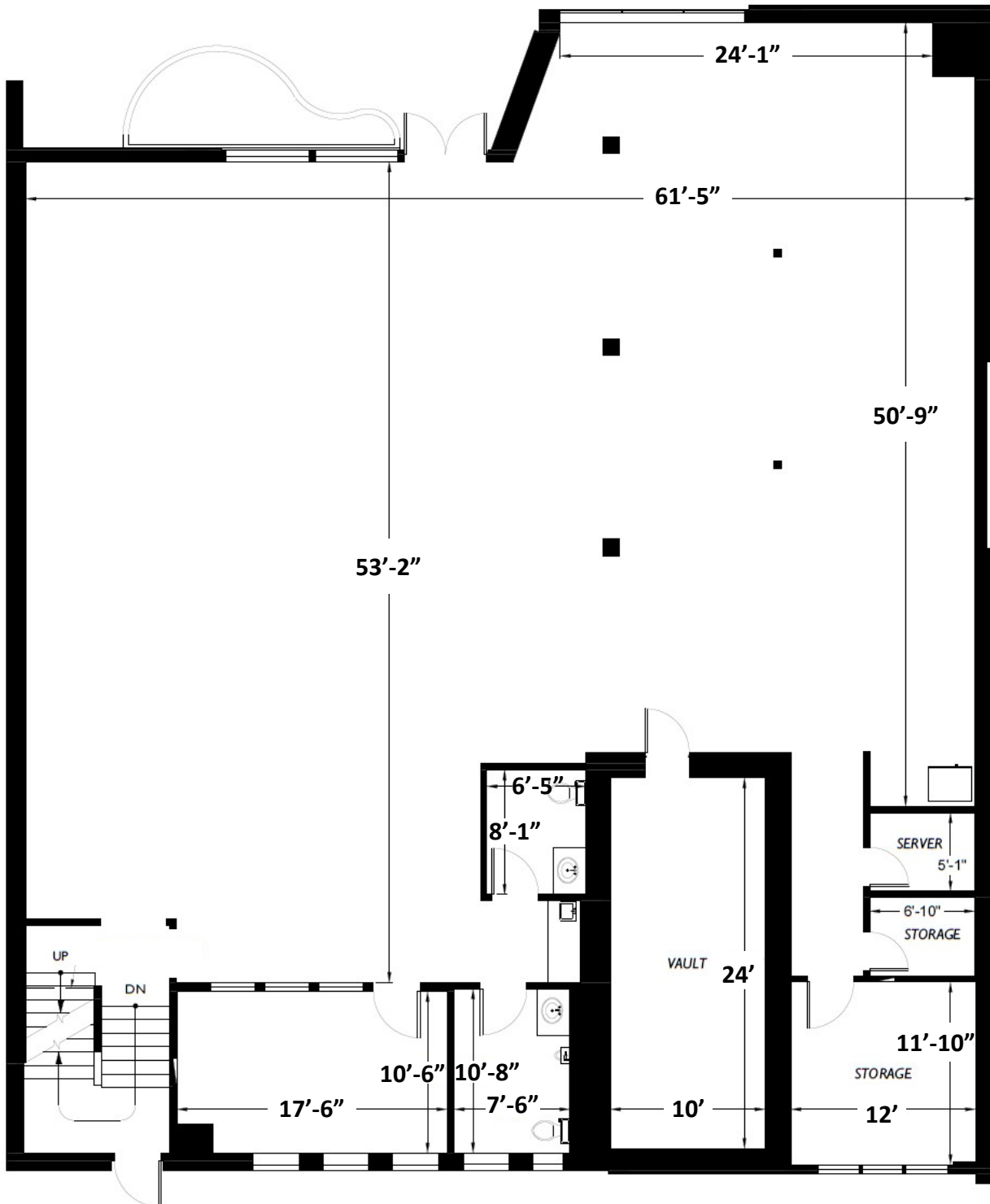
C: 425-785-9474 P: 425-746-6066

[blake@pmfinvestments.com](mailto:blake@pmfinvestments.com)

The information contained herein has been obtained from sources deemed to be reliable, however PMF Investments makes no warranties or representations to its accuracy. All information should be independently verified by prospective tenants and/or their representatives.

# MARKETPLACE BUILDING

## Dimensioned Plan



**PMF REAL ESTATE SERVICES**  
*a PMF Investments Company*

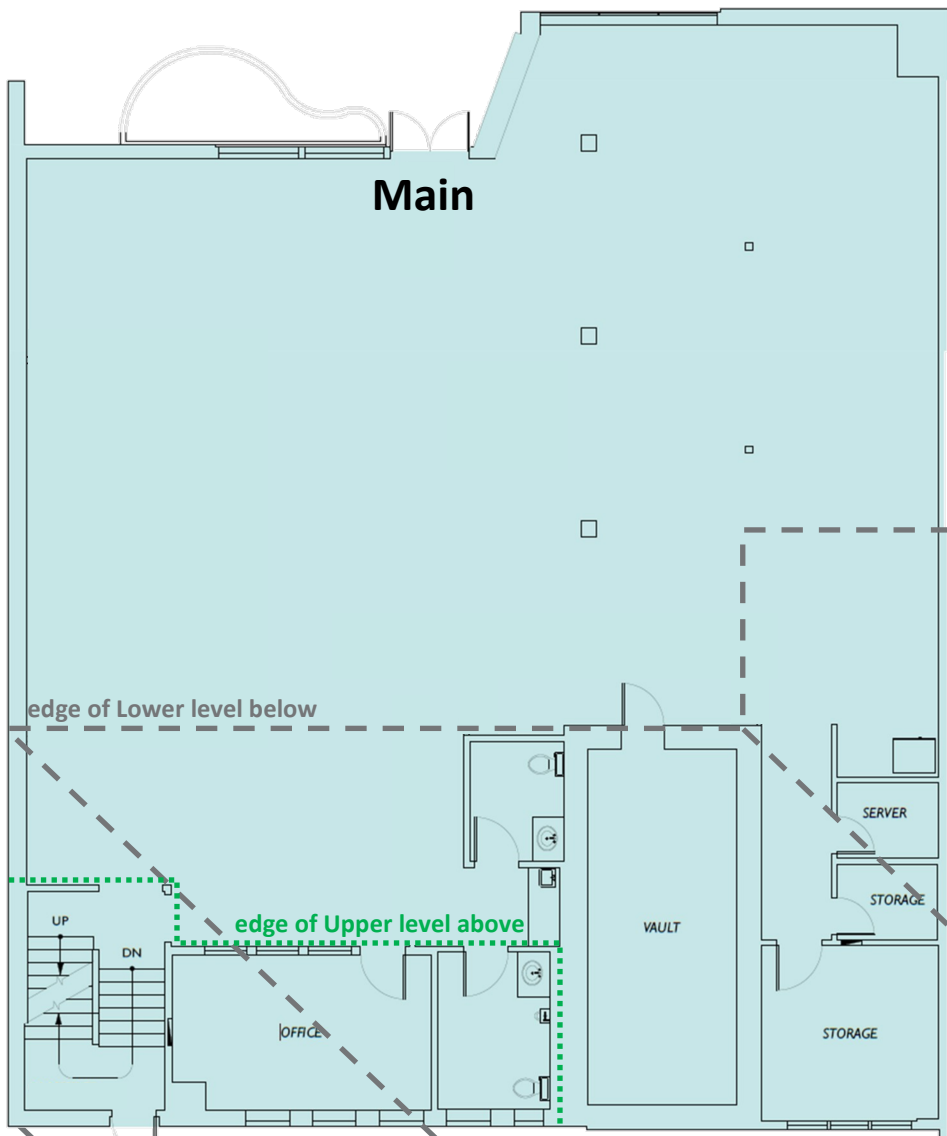
**Deborah Oswald** C: 425-443-0221 P: 425-746-6066 [deborah@pmfinvestments.com](mailto:deborah@pmfinvestments.com)  
**Blake Springer-Trybus** C: 425-785-9474 P: 425-746-6066 [blake@pmfinvestments.com](mailto:blake@pmfinvestments.com)  
[pmfinvestments.com](http://pmfinvestments.com) 15015 Main Street, Suite 203, Bellevue, WA 98007

The information contained herein has been obtained from sources deemed to be reliable, however PMF Investments makes no warranties or representations to its accuracy. All information should be independently verified by prospective tenants and/or their representatives.

# MARKETPLACE BUILDING

## Space Plan

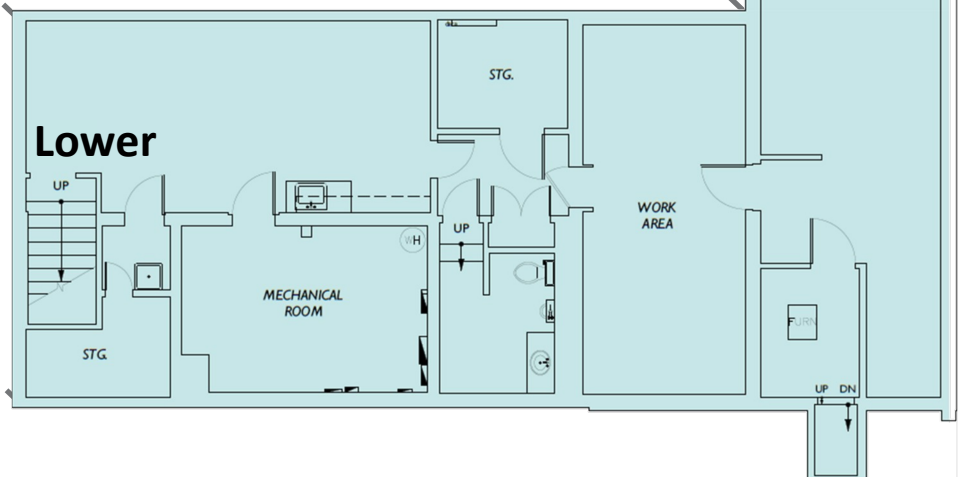
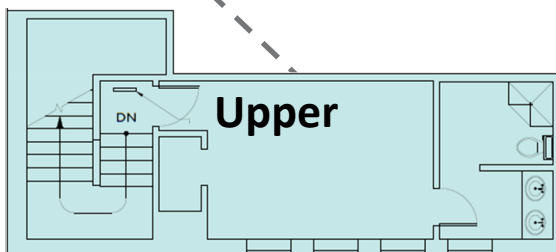
Former downtown bank branch, historic brick façade and vault, original terrazzo floors, ample storage and back of house areas, potentially expandable building footprint, outdoor yard or play area.



**6,875rsf**

Upper: 499rsf  
Main: 4,471rsf  
Lower: 1,905rsf

**PARKING**

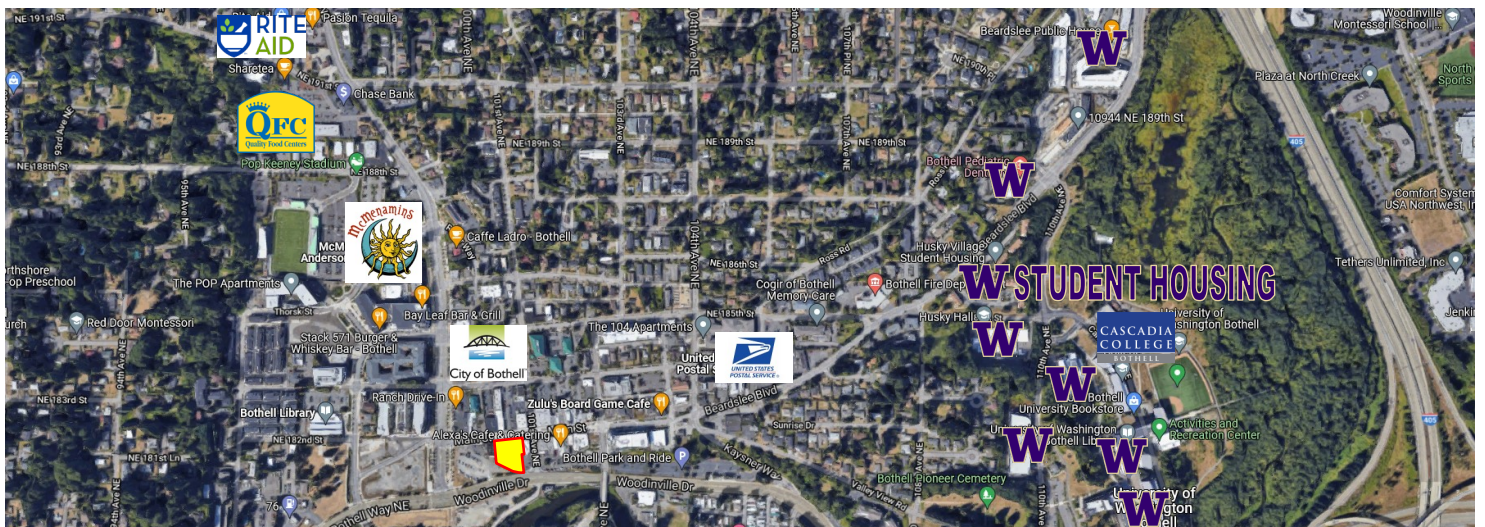
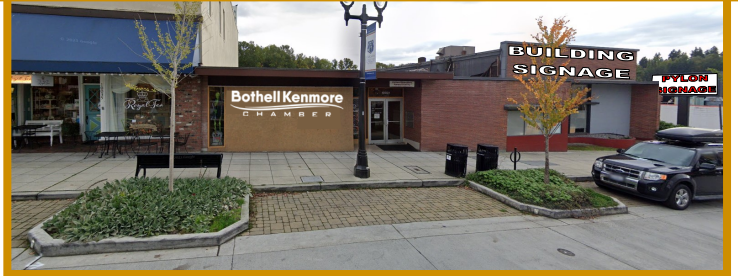


PMF REAL ESTATE SERVICES  
a PMF Investments Company



# MARKETPLACE BUILDING

# Aerial Map



**PMF REAL ESTATE SERVICES**  
a PMF Investments Company

Deborah Oswald C: 425-443-0221 P: 425-746-6066 [deborah@pmfinvestments.com](mailto:deborah@pmfinvestments.com)  
Blake Springer-Trybus C: 425-785-9474 P: 425-746-6066 [blake@pmfinvestments.com](mailto:blake@pmfinvestments.com)  
[pmfinvestments.com](http://pmfinvestments.com) 15015 Main Street, Suite 203, Bellevue, WA 98007

The information contained herein has been obtained from sources deemed to be reliable, however PMF Investments makes no warranties or representations as to its accuracy. All information should be independently verified by prospective tenants and/or their representatives.